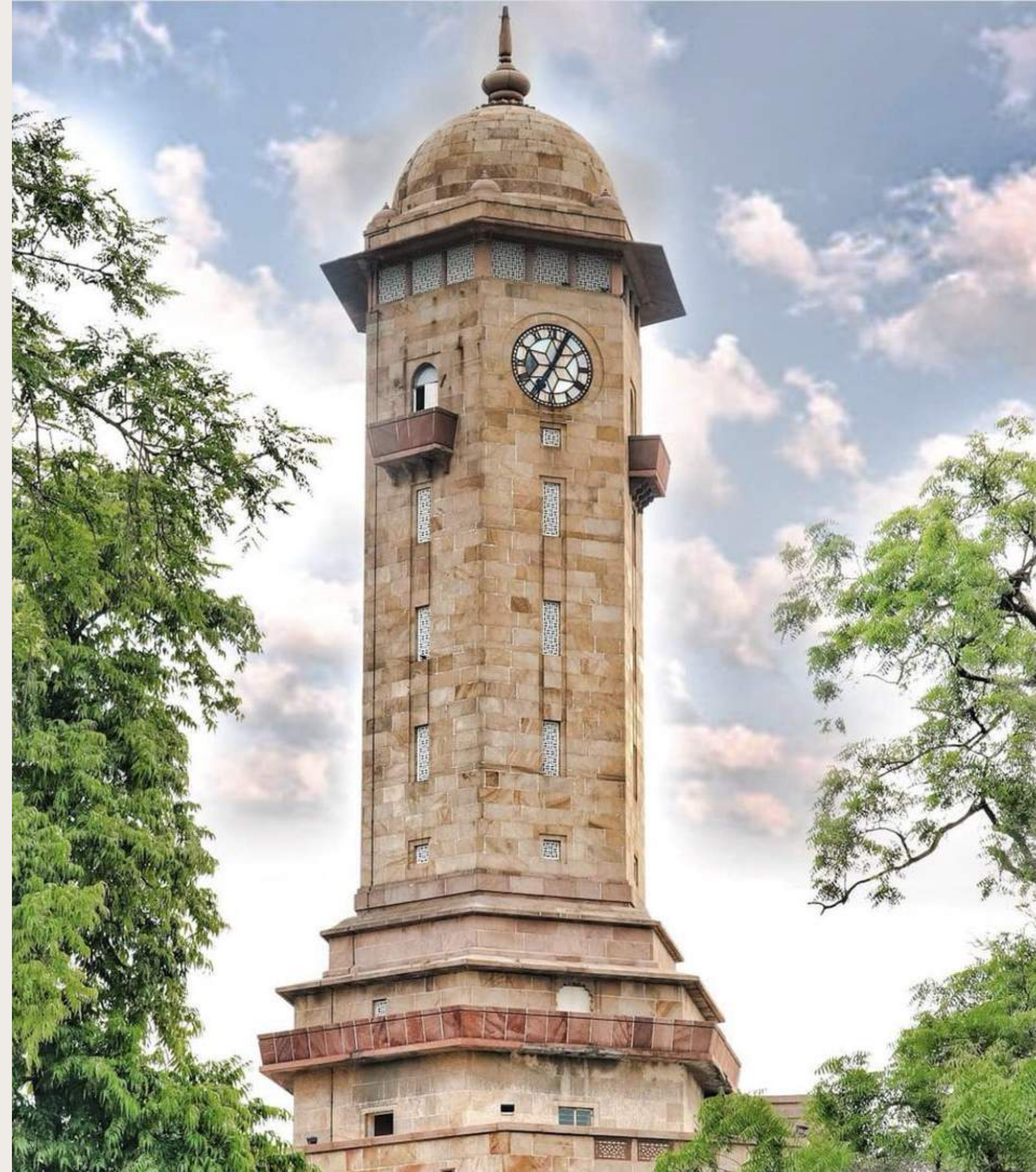




# MSC IN AGRIPRENEURSHIP & VALUE CHAIN MANAGEMENT





Indian Institute of Sustainability has been established by Gujarat University. Gujarat University is ranked 1st in the state by Gujarat State State Framework and 26th in-country by Outlook-ICARE India University Rankings 2019. IIS aspires to be known as one of its kind sustainability institute, working at the frontiers of practice, research, and education to foster a more environmentally sound and socially responsible society. The objective of IIS is to promote research, training, policy advocacy, technology transfer, startups, entrepreneurs, innovators, and fundraising for sustainable development in various dimensions in collaboration with international institutions, government, businesses, and different stakeholders.



# ABOUT US

---



MSc in Agripreneurship & Value Chain Management is a full time, two year program aimed at empowering agribusiness leaders, agriculture entrepreneurs, intrapreneurs, and value chain experts with the necessary skills, knowledge, exposure, attitude, and understanding the agribusiness, agro-based enterprises, rural & allied sectors as well as developing their businesses with a strong international focus. This is also a hands-on program that allows students to work on problem-solving ideas, learn about entrepreneurship, and start businesses as part of their studies. The initiative will also aid in the development of agricultural value chain expertise among the aspirants.

## OVERVIEW

---

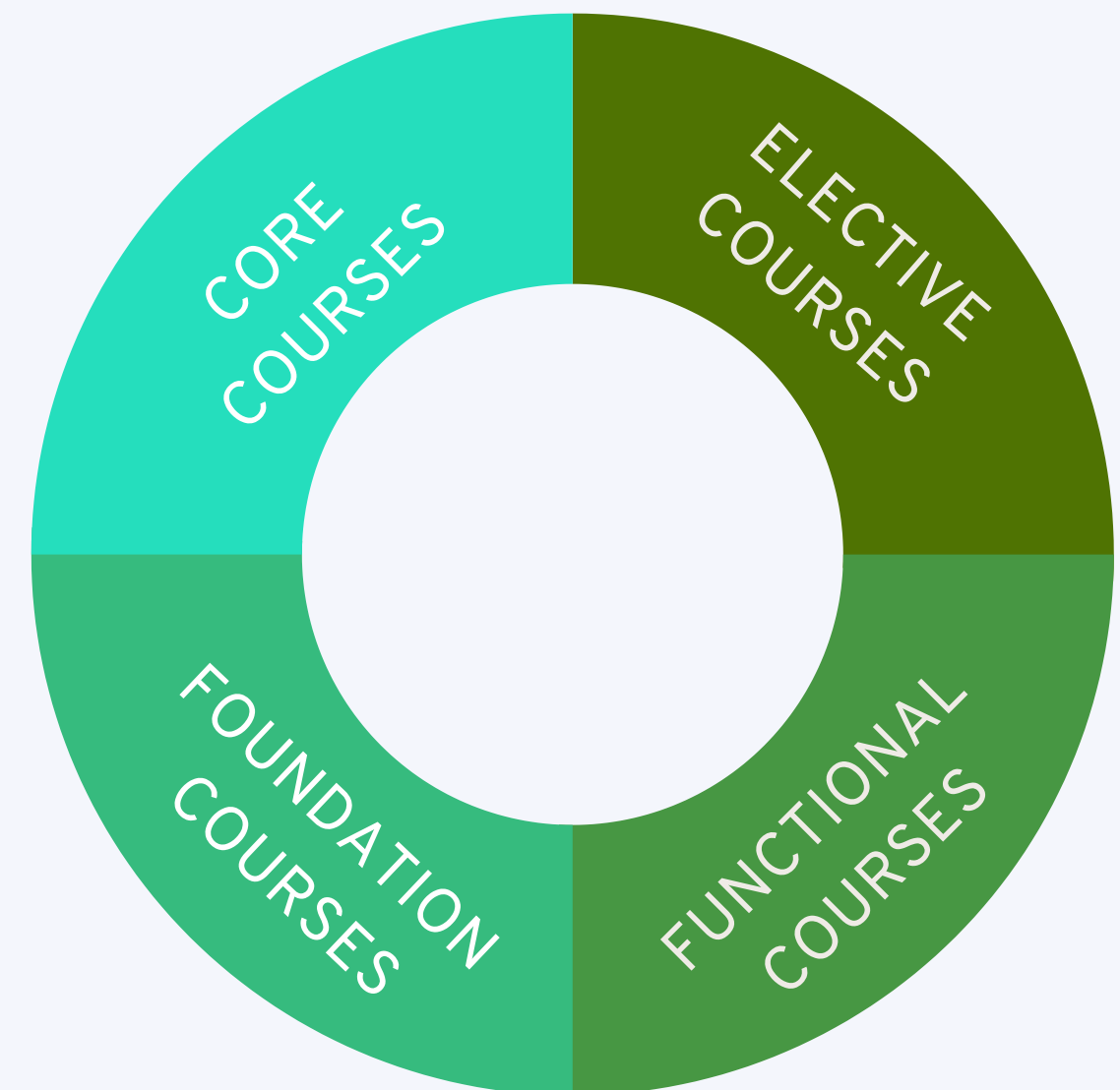






# What will you study?

- Students at IIS will study courses as part of their curriculum as core courses, foundation courses, functional courses and elective courses.
- Students will learn and explore the the concept of agriculture entrepreneurship, business management, policy making, managing enterprises, etc. These concepts are built upon the foundation of sustainability goals.
- There will be various subjects imparting the best of '21st century required skills' such as technological know-how, business, economics, marketing, finances, agribusiness management, live projects and of course entrepreneurship, and much more.





# IMPORTANT MODULES

ENVIRONMENT & CLIMATE CHANGE

INNOVATION & ENTREPRENEURSHIP

FARM TO FORK SUPPLY CHAIN

AG-TECH

RURAL LINKAGE

INNOVATION & SUSTAINABILITY

AGRICULTURE TRADE & EXPORTS

OPERATION MANAGEMENT OF BUSINESS

NEXT-GEN FARMING TECHNIQUES

ANIMAL HUSBANDRY, DAIRY & FISHERIES



DR. MARK A. GAGNON

Associate Professor, Agribusiness  
Penn State University, USA



ABHAY KUMAR, IES

Director, Ministry of Finance,  
Govt. of India



PROF. DR. RAMASWAMY C.  
ANANTHESWARAN

*Professor, Food Science*  
Penn State University, USA



ARNAUD JOHANET

Commercial Director, France



PROF. DR. A. R. PATHAK

Former Vice-Chancellor, Junagadh  
Agricultural University



AYAZ KHATRI (IIFT ALUMNI)

Independent Consultant & Managing  
Partner, ARAC INTERNATIONAL LLP

---

# FACULTIES



DR. GARIMA CHAUHAN

Scientist at Steeper Energy, Alberta,  
Canada



PROF. DR CATHERINE PELISSERO  
BENNETAU

Professor and Scientist,  
University of Bordeaux, France



ANURAG KASHYAP (IIMA ALUMNI)

Management Trainee, Coromandel  
International Limited



DR. SUNIL KUMAR (NDRI ALUMNI)

Researcher, ICAR-NDRI



RAJESH KUMAR PANT (IIMA ALUMNI)

General Manager at Synergy Technofin Pvt.  
Ltd.



MRS. MARIYA STOILOVA

Global Channel Development Specialist,  
SAP, Germany

---

# FACULTIES

# SALIENT FEATURES

RENOWNED FACULTIES FROM GLOBALLY HIGH RANKED INSTITUTIONS

FIELD EXPOURE AND SUPPORT FOR NEW STARTUP THROUGH INCUBATORS

SUMMER COURSE & STUDENT EXCHANGE OPPORTUNITIES WITH GLOBAL PARTNERS

PROGRAMS ARE MORE INCLINED INTO PRACTICAL EXPOSURE AND INDUSTRIAL EXPERIENCE

ACTION-ORIENTED STRATEGY COMBINING MANAGEMENT, PUBLIC POLICY, & ALL ASPECTS OF AGRIBUSINESS



# CAREER OPPORTUNITIES





# LEARNING OUTCOMES

---

- UNDERSTAND PEOPLE, POLICY, AND PROFESSIONAL (PPP) ECOSYSTEM OF AGRICULTURE AND FOOD VALUE CHAIN.
- UNDERSTAND THE IMPORTANCE OF VALUE CHAIN, AND SMART FARMING TO HELP MAKE MORE EFFECTIVE BUSINESS DECISIONS.
- IDENTIFY UPCOMING TRENDS IN ENTREPRENEURSHIP IN THE AGRICULTURE AND FOOD SECTOR AND SETUP STARTUP/COOPERATIVE/FARMER PRODUCER ORGANIZATION.
- HANDLE DIFFERENT TYPES OF GROUND-LEVEL CHALLENGES AND SOLVE ANALYTICAL PROBLEMS.



# ADMISSION PROCEDURE

FOR ADMISSIONS  
LOG IN TO-  
[WWW.GUJARATUNIVERSITY.AC.IN](http://WWW.GUJARATUNIVERSITY.AC.IN)

SELECT NEW  
REGISTRATION  
BY CLICKING  
ON THE LINK  
ON THE PAGE

FILL UP THE  
REGISTRATION  
FORM AND  
MAKE A  
PAYMENT

PAYMENT CAN  
BE MADE  
ONLINE OR  
OFFLINE TO  
MAKE  
ADMISSIONS  
ACCOUNT  
ACTIVATED

FILL YOUR  
PREFERENCE  
CHOICES FOR  
ADMISSION

PAYS FEES &  
GET  
CONFIRMATION  
OF ADMISSION

FOR MORE  
INFORMATION VISIT  
[IISG.AC.IN](http://IISG.AC.IN)

**Fee: 30000/Semester**  
**Duration: Two years**

**VISIT [WWW.GUJARATUNIVERSITY.AC.IN/ADMISSIONS](http://WWW.GUJARATUNIVERSITY.AC.IN/ADMISSIONS)**  
**Offline admission also available, Visit [iisg.ac.in](http://iisg.ac.in)**



# GLOBAL PARTNERS



- Study Visits to Geneva
- Online Training Programmes
- Study Visits to other Cities
- Training Workshops
- Joint Academic Programmes



- Summer programs and Summer internship opportunities



- Teaching by the Faculty of Penn State University



- Student exchange opportunities





INCUBATION  
PARTNERS



**MissionMangalam**  
Gujarat Livelihood Promotion Company Limited



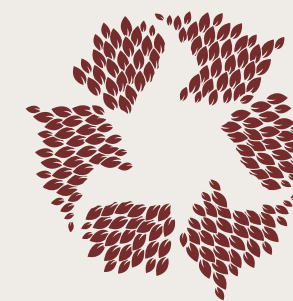
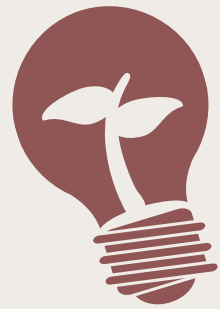
**NAFED**



एनसीडीसी  
**NCDC**

PSU  
PARTNERS





## CONTACT US

Email

[iis@gujaratuniversity.ac.in](mailto:iis@gujaratuniversity.ac.in)

Website

[iisg.ac.in](http://iisg.ac.in)

Phone number

+91 89 5586 2011

## FOLLOW US

Facebook  
Indian Institute of Sustainability



Twitter  
@iisofficialpage



Instagram  
@iis\_officialpage

